

NOTES

INTERNAL WALLS -

SINCE SOME INTERNAL WALLS ARE FACE BRICK UP TO DADO LEVEL, ALL WATER, ELECTRICAL AND GAS INSTALLATIONS TO BE DISCUSSED AND AGREED ON SITE PRIOR TO ERECTION OF WALLS.

WATER, ELECTRICAL AND GAS INSTALLATIONS TO BE BUILT INTO FACE BRICK WALLS WHERE NEEDED AS NO CHASING CAN BE DONE AFTER CONSTRUCTION THEREOF

NO SURFACE MOUNTED SERVICES ARE ALLOWED, APPROPRIATE "S/S 1216 COMPOSITE PIPE" TO BE USED WHEN PIPING IS INSTALLED WITHIN WALLS AND FLOOR SLABS. INSTALLATION TO BE DONE BY CERTIFIED GAS INSTALLER.

FURNITURE -

FOR LOOSE AND FIXED FURNITURE REFER TO FURNITURE SCHEDULE AND JOINERY DRAWINGS.

STORM WATER

POSITION OF TANKS AND CONCRETE RAINWATER CHANNEL TO SUIT SITE CONDITIONS AS PER SITE LAYOUTS TO ACCOMMODATE STORMWATER AND OVERFLOW, TO CIVIL ENG'S DESIGN AND DETAIL

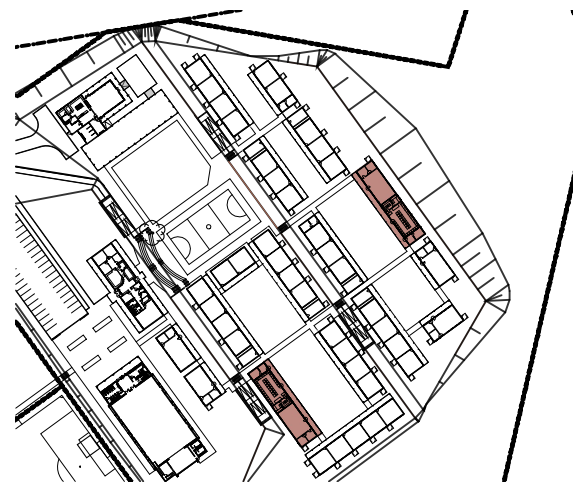
TRUSS

TRUSS MANUFACTURE TO SUBMIT A WORKSHOP DRAWING FOR APPROVAL

NO.	DATE	REVISION	DRAWN
A	2017-02-02	ISSUED FOR MEASURE	SG
B	2017-02-07	(I) FIRE WALL NOTE ADDED ON PLANS AND ELEVATIONS (II) ISSUE FOR MEASURE	SG
C	2017-02-16	ISSUED FOR INFORMATION	SG
D	2017-06-22	(I) ROOF NOTE ADDED ON SECTION (II) FOUNDATION CHANGED FROM RAFT TO STRIP (III) ROOF PLAN REVISED (IV) FIRE EXTINGUISHERS INDICATED (V) ISSUE FOR MEASURE	SG
E	2017-07-27	(I) TOP OF CONCRETE LEVEL NOTES UPDATED (II) ELEVATION NAMES UPDATED (III) ISSUE FOR MEASURE	SG
F	2017-12-07	(I) ROOF TRUSS NOTES REVISED (II) WINDOWS IN STORE & SERVER ROOM REMOVED AND REPLACED WITH VENTS (III) DOORWAY ADDED IN STORE & SERVER ROOM DOORS (IV) CONSTRUCTION JOINT SHOWN ON VERANDAH (V) TOP OF CONCRETE REVISED (VI) ISSUE FOR INFORMATION	SG
G	2018-03-19	(I) TOP OF CONCRETE LEVEL REVISED (II) VINYL TILES CHANGED TO VINYL SHEETINGS (III) GAS ADDED TO STORE ROOM (IV) ISSUE FOR INFORMATION	SG
H	2018-03-23	(I) WATER TANK ADDED TO BLOCK (II) ISSUE FOR INFORMATION	SG
J	2021-03-01	ISSUED FOR INFORMATION AMENDED AREAS: (I) ROOF CHANGED TO GABLE END (II) CHANGED 330 x 330mm VERANDAH COLUMNS TO 150 x 100mm STEEL POSTS	DW MM H.S.
K	2022-04-13	ISSUED FOR INFORMATION (I) WINDOW OPENING SECTIONS REVISED (II) DWG NO. CHANGED FROM H417 TO 2204	DW
AA	2022-07-15	ISSUED FOR MEASURE (I) LIBRARY/MEDIA CENTRE ADDED TO BLOCK (II) DRAWING WY-42-201 ADDED	DW
AB	2022-08-16	(I) LEVELS INDICATED USING 100.000 AS T.O.C.	DW

ISSUED FOR
APPROVAL

KEY



PSP

ARCHITECT



ARCHITECTURAL PROFESSIONAL SACAP NUMBERS:
H.L. MANTEL SACAP 3045

IMPLEMENTED BY

**INDEPENDENT
DEVELOPMENT
TRUST**

SIGNATURE	DATE	SHEET NO.
DESIGNED -	-	A1
DRAWN OM	06/10/2017	1:100
VERIFIED -	-	STATUS LISTING
VALIDATED -	-	I = INFORMATION FM = FOR MEASURE T = TENDER C = CONSTRUCTION AB = AS BUILT

CLIENT



IMPLEMENTING AGENT



PROJECT
**DOE PORTFOLIO PROGRAMME
ESTABLISHMENT OF NEW SCHOOLS
HILLBROW - SENIOR SECONDARY SCHOOL**
PROVINCE: EASTERN CAPE PROVINCE

DRAWING TITLE
**COMPUTER CENTRE + HOD + LIBRARY
SEC-BB & ELEVATIONS
(BLOCK S-H & S-J)**

DRAWING DESCRIPTION
COM+HOD

EMIS NUMBER	DISCIPLINE	DRAWING NUMBER	STATUS	REVISION
200500293	ARCH	2204 w01 06/201	FA	AM